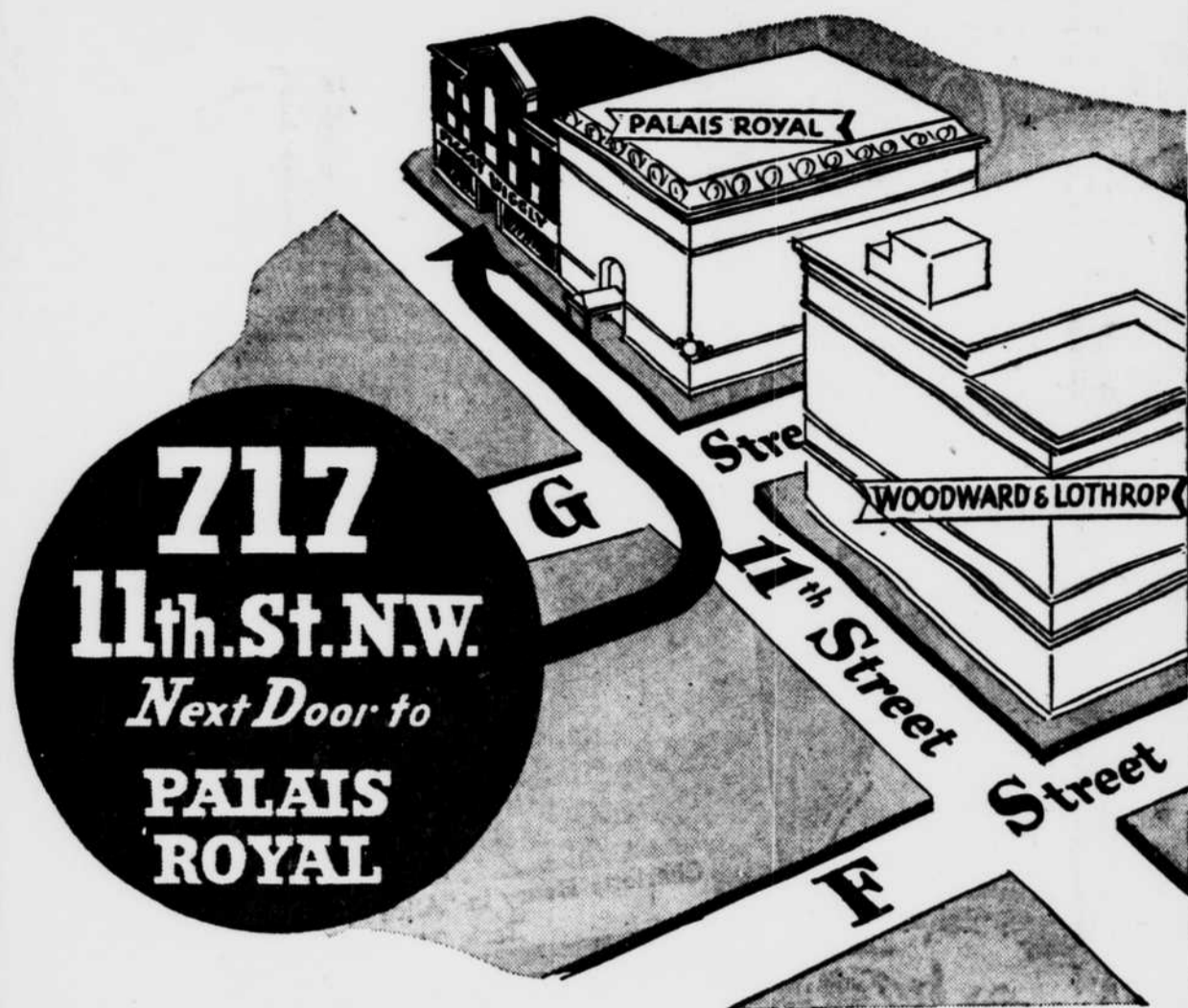


A New Downtown PIGGLY WIGGLY

With a prominent address



717
11th St. N.W.
Next Door to
PALAIS ROYAL

Formally Opens
Tomorrow 1 P.M.

Tomorrow the turnstiles will begin clicking in downtown Washington's most conveniently located PIGGLY WIGGLY—one door north of Palais Royal on 11th Street, only a few steps from the famous corner of 11th and G! What news could be more welcome to the busy holiday shopper? The shopper to whom minutes are precious and steps are tiresome.

PIGGLY WIGGLY respects those precious minutes by asking you to wait for no one—you are always "next"—you make your own selections quickly and without persuasion. You are free to roam along the well stocked shelves to study labels and compare prices. Then to the checking counter, where your selections are totaled as quickly and efficiently as a bank clerk tallies your deposit. Then out you go with time and money to spare. That's the PIGGLY WIGGLY way—the truly modern method of food shopping.

Only a few steps from the famous corner of "11th & G"

If you board your street car at 11th and G, this is especially good news—the new PIGGLY WIGGLY is only a short distance north of the 11th Street loading platform! Drop in and do your shopping while waiting for your car—it may save you many steps when you get home.

In addition to providing a convenient location, everything possible has been done to install equipment of the most modern type. Equipment that would facilitate sanitation and to guard and preserve your foods with the same degree of efficiency you insist upon in your own pantry and refrigerator. You are invited to inspect every nook and corner and see if we have not succeeded in building a store that you would plan for yourself.

Something New in modern food Store interiors

Black and silver! A new modern decoration resulting from a scientific study of color schemes. A decoration that is pleasing to the eye and one that contrasts sharply with package labels, making them easy to locate. You'll appreciate this innovation in store interiors the moment you see it.

White porcelain fixtures add greatly to the sanitation—white Marsh tiling lends itself to the general clean appearance of the store. A shining meat department, a special produce department are all combined to make a store that will brighten your eyes and quicken your pulse each time you enter it.

A complete food service under one roof

Everything from anchovies to corn meal—caviar to salt, grace the well-stocked, systematically arranged grocery department. A spotless, shining meat department stands ready to serve you with fine U. S. Government inspected meats. A large produce department, with special spraying equipment to keep vegetables crisp and fresh, has been installed. Truly a complete food service under one roof—offering PIGGLY WIGGLY quality at the usual PIGGLY WIGGLY savings.

You are cordially invited to attend the opening while downtown tomorrow or Saturday



Order Your
**CHRISTMAS
TURKEY
TODAY**

Pork Loin ROAST
Whole or Half
lb. **17c**

Fresh Pork Shoulders
lb. **14c**

SANICO HAMS
Whole or Half
lb. **19c**

CHUCK ROAST
lb. **16c**

Prime Rib ROAST
lb. **23c**

SEA FOOD

- Sliced Halibut lb. 29c
- Sliced Salmon lb. 29c
- Fresh Trout lb. 19c
- Fresh Sea Bass lb. 19c
- Spanish Mackerel lb. 19c
- Smelts lb. 23c
- Cooked Shrimp, 1/2 lb. pkg. 23c
- Fresh Croakers lb. 10c
- Fresh Fillet of Haddock, lb. 21c

Salt Water OYSTERS

- 1/4 pt. 13c
- 1 pint cup 23c
- 1 quart cup 45c

Additional Meat Values

- Fresh Spareribs** lb. **14c**
- Pork Chops** End lb. **17c**; Select lb. **23c**
- Fresh Hams** lb. **19c**
- Bulk Sauerkraut** 2 lbs. **13c**
- Freshly Ground Beef** 2 lbs. **25c**
- Sanitary's Sausage** Meat or Links lb. **25c**
- Briggs** Partly Smoked Country Style **Sausage** lb. **25c**
- Sanitary's Franks** Regular or Skinless lb. **25c**

Reduced!



Randall's
Ready-To-Serve
CHICKEN

A complete chicken 2-lb. 87c
—bones and all ready 9-oz. can
to heat and serve.

Take home a can today.

Standard Tomatoes.. 2 No. 2 cans 15c

This is the Week to Buy



Silver Dust

While it is specially priced at

2 Packages for **25c**

Mail 50 Box Tops to Manufacturer and Get a Pair of Silk Hose Free.

U. S. Government Certified Grade "A"

Fresh Breakfast Eggs

The Finest Eggs We Can Pack doz. **47c**

Look for the Government seal and date on the carton.

Tree Sweet
Pure California

Orange Juice

Buy orange juice this economical way! Just open and pour. Sun-ripened and tree fresh.

4 cans for **45c**

This Week's Grocery
VALUES

- Walter Baker's Chocolate** 1/4-lb. cake **20c**
- I. X. L. Almonds** lb. **19c**
- White Star Tuna** 2 cans **29c**
- Hunt's Bartlett Pears** 2 large cans **41c**
- Hunt's Red Raspberries**, 2 cans **35c**
- Hunt's Italian Prunes** 2 large cans **25c**
- Sanico Oats** 2 26-oz. pks. **15c**; 2 48-oz. pks. **35c**
- Tripoli** Chicken & Noodle **Dinner** jar **21c**
- Brer Rabbit Molasses** Green Label 2 cans **25c**
- N. B. C. "Ritz" Crackers** 1-lb. pkg. **19c**
- Corn Meal** Indian Head 5-lb. sack **17c**; 10-lb. sack **33c**
- Bulk Prunes** 70-80 Size 4 lbs. **25c**
- Sanico** Pancake or Buckwheat **Flour** 2 pks. **15c**
- Marvin** Golden Unpitted **Dates** 1-lb. pkg. **14c**
- Pure Cane Sugar** 10 lbs. **51c**
- Michigan Pea Beans** 2 lbs. **9c**
- "Early Morn" Pancake Syrup** large bottle **21c**
- Vermont Maid Syrup** bot. **19c**
- Musselman's Applesauce**, 3 No. 2 cans **25c**
- Dromedary Dixie Mix** can **37c**

The New **JELL-O** or WALTER BAKER'S **Chocolate Flavor DESSERT**

Your Choice **3 pks. 19c**

Dog Food Sale!

- Ken-L-Ration** doz. cans \$1.00
- Marco, small** doz. cans 55c
- Marco, large** 3 cans 22c
- Strongheart** doz. cans 75c
- Doggie Dinner** 3 cans 25c
- Case of 24 cans \$1.75

U. S. Govt. **93 SCORE**

Land O'Lakes
Sweet Cream
Butter . . . 39c
Per Pound
Swift's **Brookfield Butter** lb. 37c
Country Style
Jumbo Butter lb. 34c

Sanico Flour 5-lb. sack, 23c 6-lb. sack, 28c 12-lb. sack, 49c 24-lb. sack, 95c

- Texas Bunch Beets** 2 bunches 15c
- New Cabbage** 2 lbs. 9c
- Old Cabbage** 2 lbs. 5c
- Golden Yellow Carrots** 2 bunches 15c
- California Celery** 2 stalks 19c
- Emperor Grapes** 2 lbs. 25c
- Iceberg Lettuce** 2 heads 19c

Bosc or D'Anjou

PEARS . . . 4 lbs. 25c

TEXAS
Delicious Pink Meat
GRAPEFRUIT
Moderately priced according to size.

California Navel
ORANGES

6 for 20c and 6 for 23c

- Red Ripe Tomatoes** 2 lbs. 25c
- California Lemons** 6 for 4 10c
- Yellow Onions** 4 lbs. 15c
- White Onions** 4 lbs. 19c
- Sweet Potatoes** 4 lbs. 15c
- White or Yellow Squash** 3 lbs. 25c
- Bulk Turnips** 3 lbs. 10c

Fancy Western Box

APPLES . . . 4 lbs. 25c

These prices prevail in Washington and vicinity until the close of business Saturday, December 15, 1934.

SANITARY & PIGGLY WIGGLY FOOD STORES

Owned and operated by the Sanitary Grocery Co.